



# THE EDUCATIONAL VALUE OF LIBERAL ART ENVIRONMENTS FOR LIFE LONG LEARNING

*CENTRE COLLEGE*  
*CASE STUDY*

# PRESENTERS

**STEPHANIE L. FABRITIUS**

VICE PRESIDENT FOR ACADEMIC AFFAIRS

DEAN OF THE COLLEGE

PROFESSOR OF BIOLOGY

*CENTRE COLLEGE*

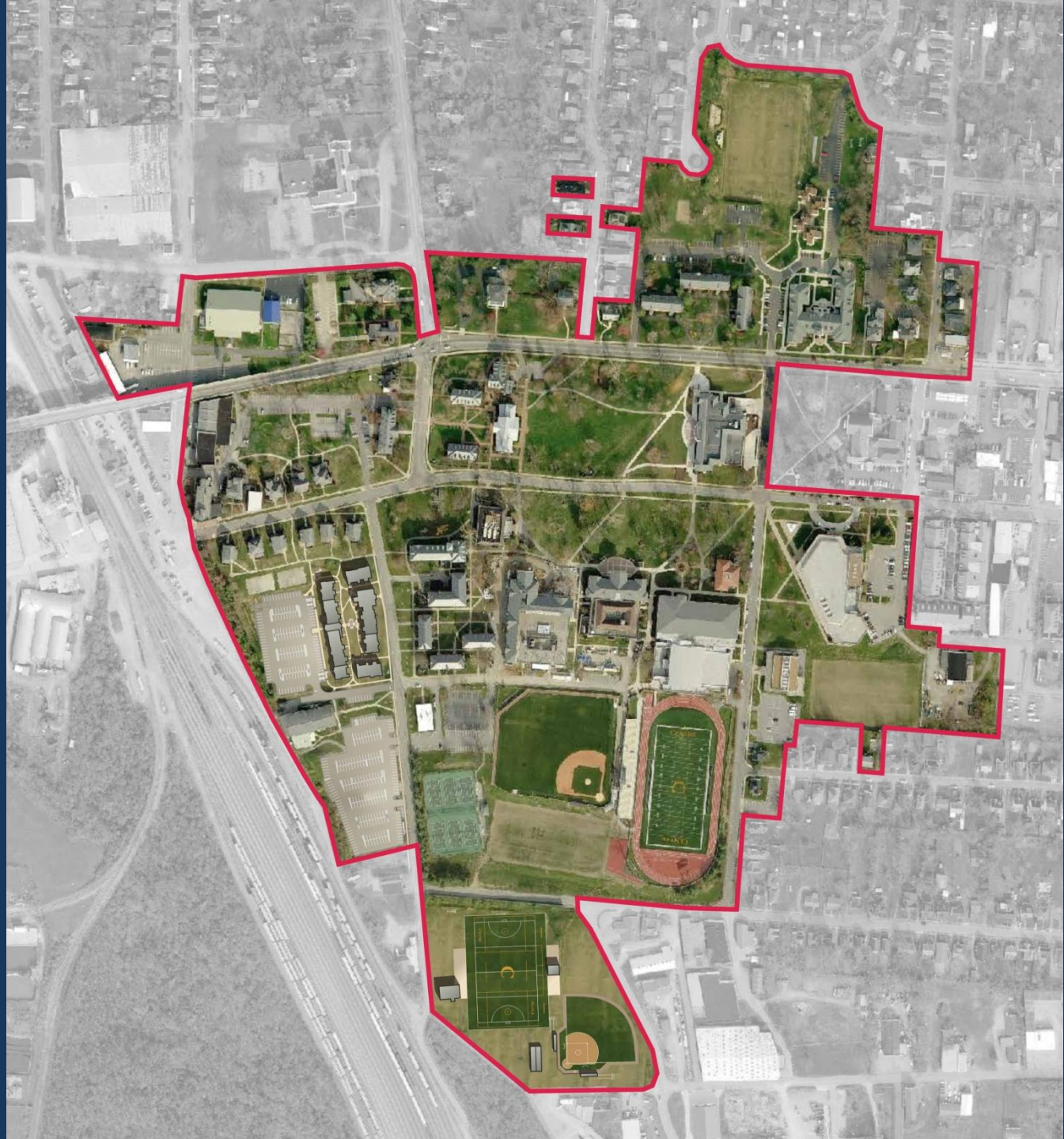
**CHRISTOPHER CHIVETTA, P.E., LEED AP**

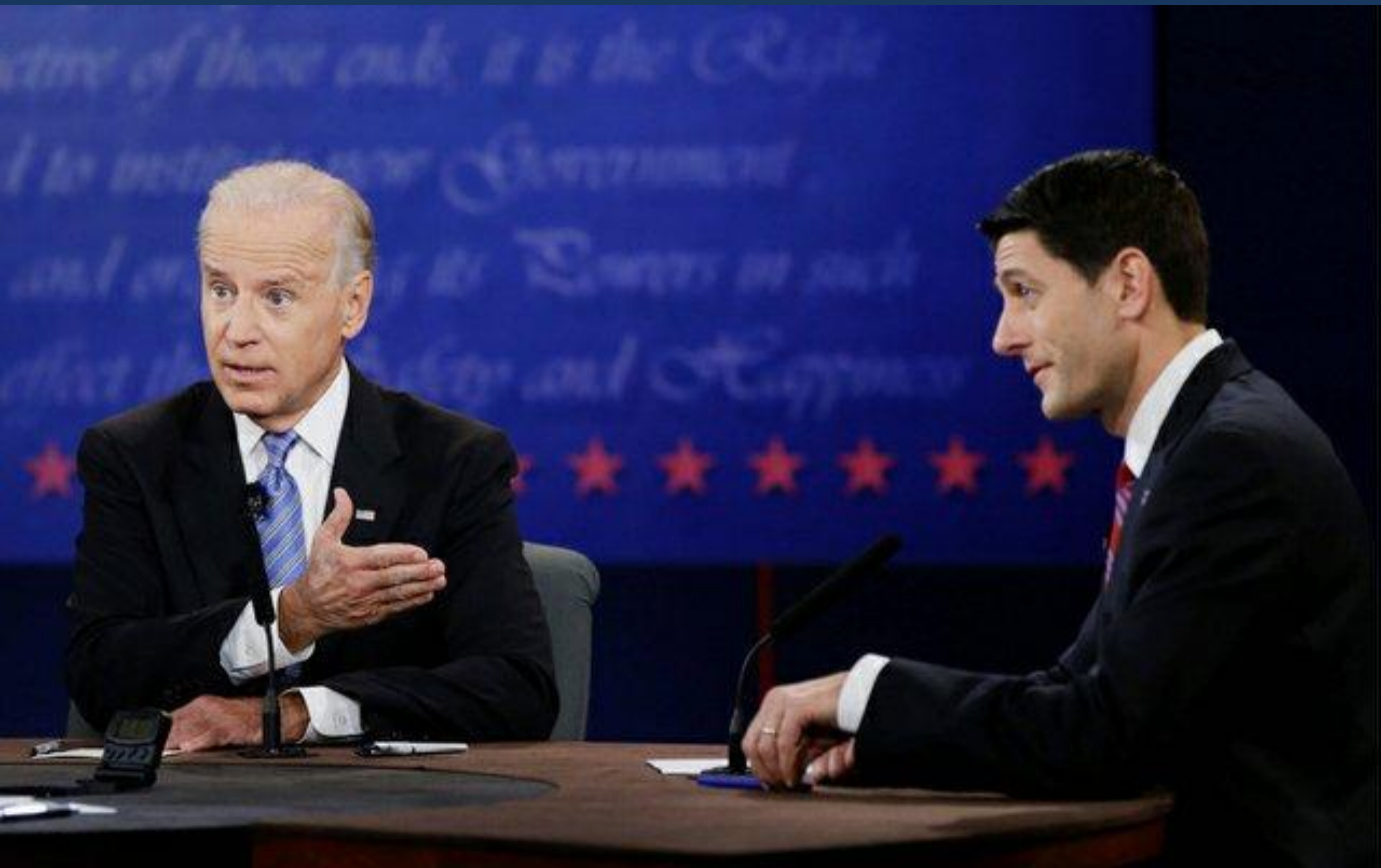
PRESIDENT / PRINCIPAL

*HASTINGS+CHIVETTA ARCHITECTS, INC.*







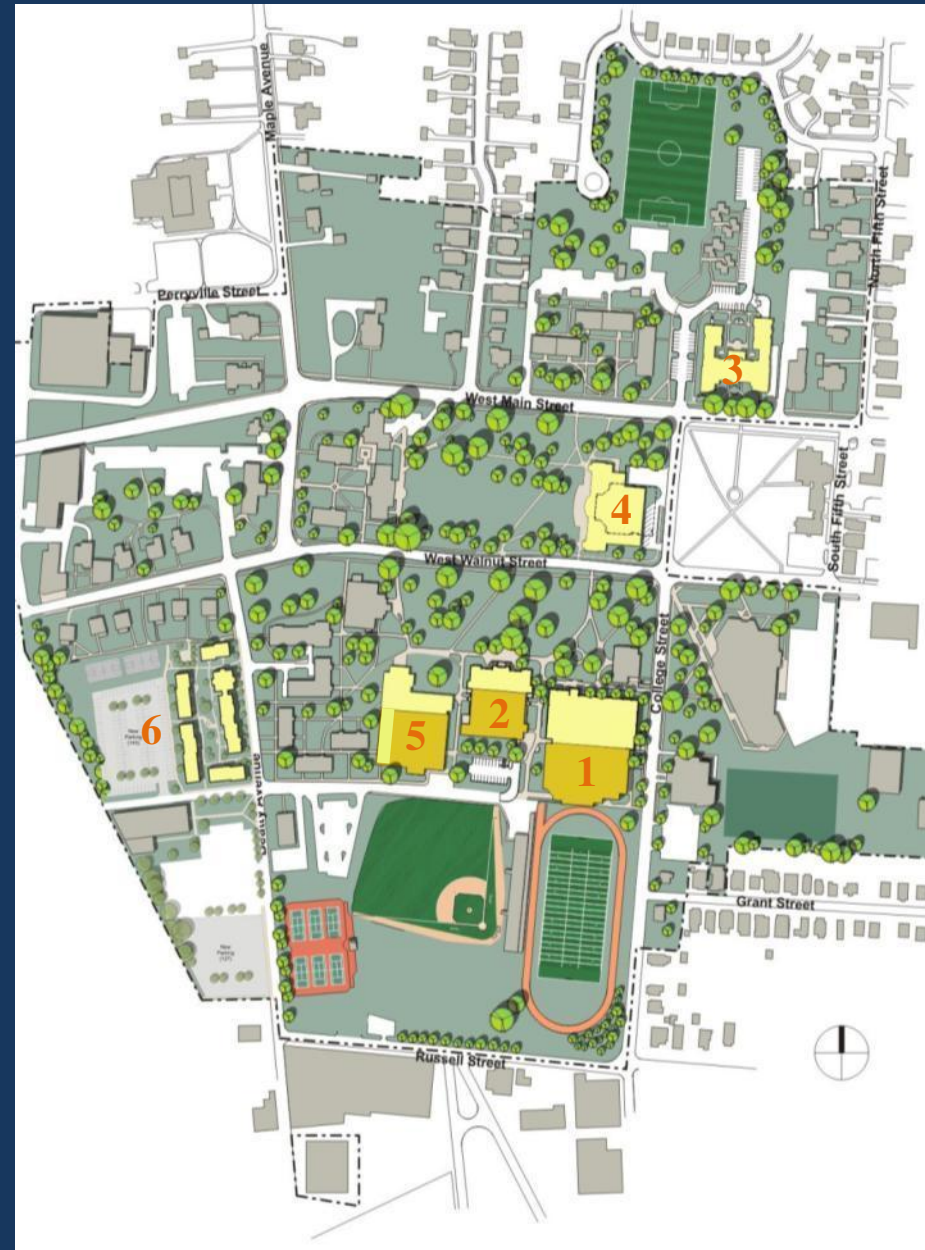




# CAMPUS MASTER PLAN

## ■ CAMPUS IMPROVEMENTS

1. ADDITION / RENOVATION OF ATHLETIC, RECREATION AND ACADEMIC SPACES
2. ADDITION OF ACADEMIC SPACE TO LIBRARY
3. NEW UPPER CLASS STUDENT HOUSING
4. NEW CAMPUS CENTER
5. ADDITION / RENOVATION OF SCIENCE COMPLEX
6. NEW APARTMENT STYLE HOUSING









SUTCLIFFE HALL





STUDENT LIFE NEEDS

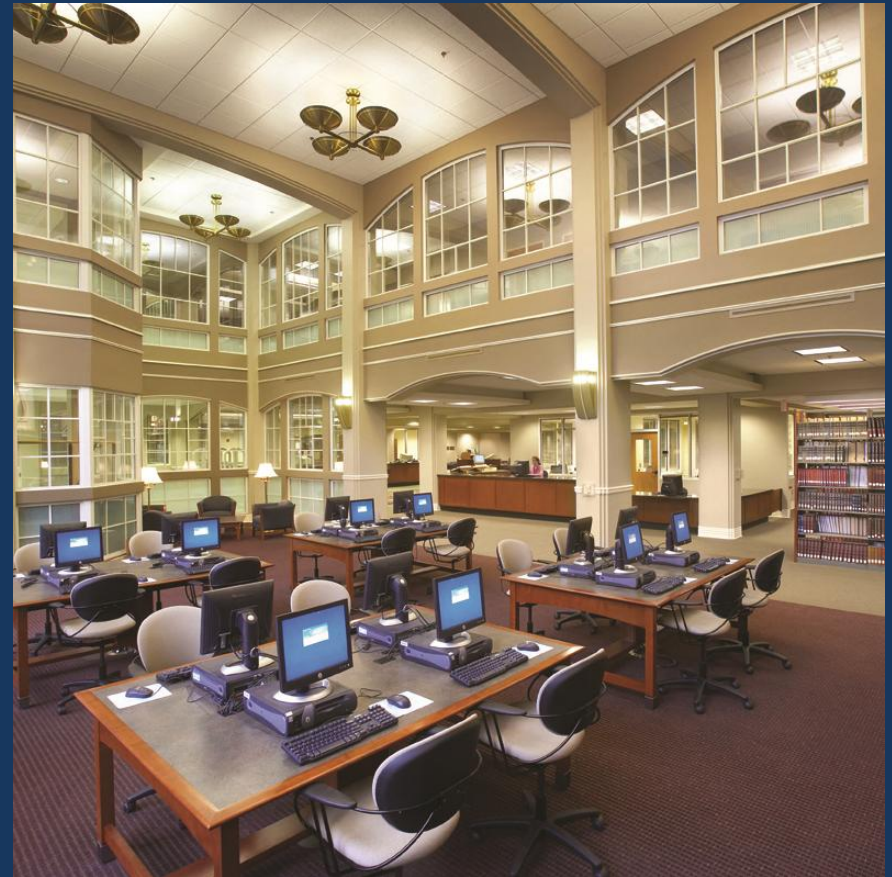


# RECREATION & ATHLETIC NEEDS





# CROUNSE HALL & DOHERTY LIBRARY



# LIBRARY FUNCTIONS





# FACULTY & STUDENT INTERACTION SPACES



ACADEMIC NEEDS





# CAMPUS CENTER





## DINING SPACES





## SOCIAL & STUDY SPACES



# GROUP INTERACTION





# PEARL HALL







# SOCIAL & STUDY SPACES





# BROCKMAN COMMONS





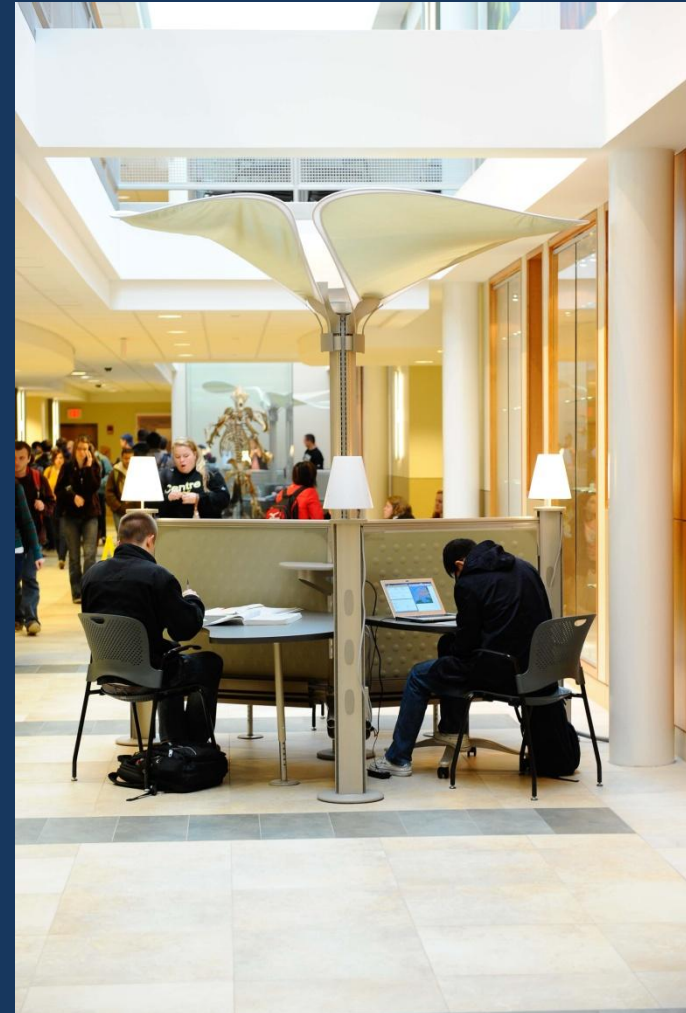


SOCIAL INTERACTION



# ENVISIONING

- INTERDISCIPLINARY
- DEDICATED RESEARCH SPACE
- COLLABORATION
- INTERACTION
- ADAPTABILITY AND FLEXIBILITY
- SCIENCE ON DISPLAY
- DESTINATION
- ENGAGEMENT
- BUILDING COMPLEMENT THE LEARNING



# CAMPUS ENGAGEMENT PROCESS

1. INCLUSIVE PROCESS WITH ALL CONSTITUENTS
2. GOALS FOR STUDENT LEARNING
3. ESTABLISHED BUILDING SPECIFIC COMMITTEES
4. BUILDING DESIGN TO OPTIMIZE GOALS

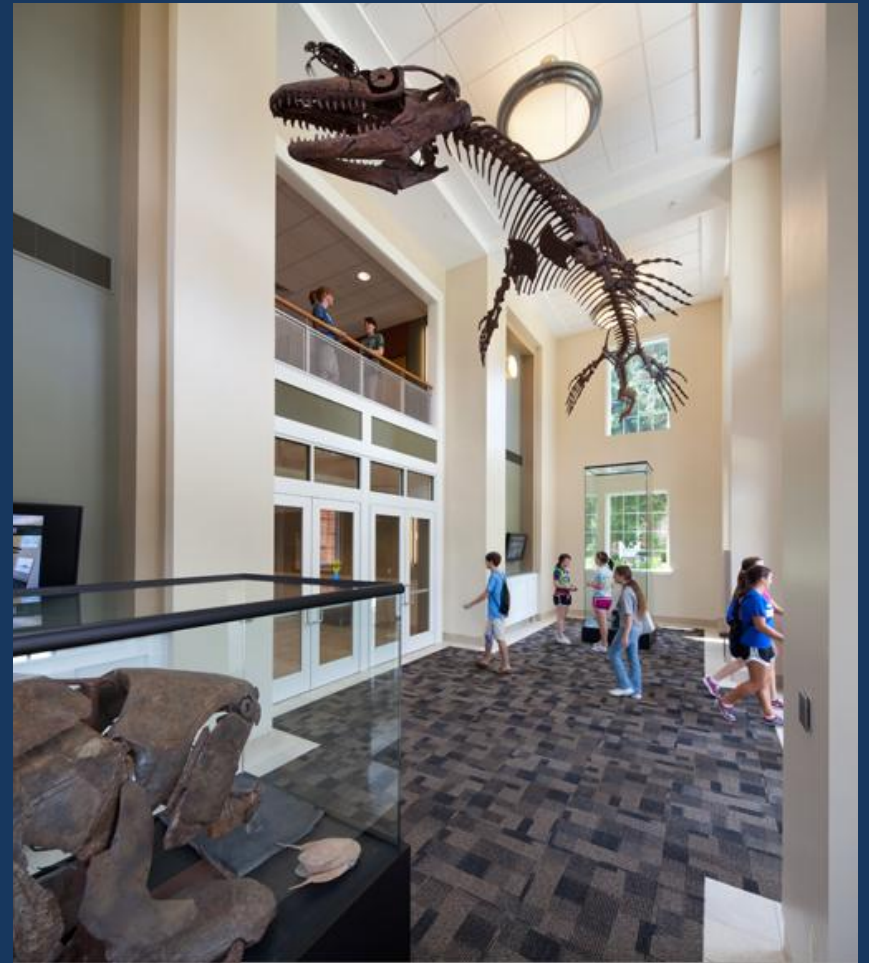






# YOUNG HALL





# SCIENCE ON DISPLAY





# LABORATORY SPACES



# ACADEMIC SPACES





# INTERACTION SPACES



# FACULTY STUDENT INTERACTION



# LESSONS LEARNED / OUTCOMES

- IMPORTANCE OF DEVELOPING VISION BEFORE DESIGN
- CAMPUS TOURS TO SEE BEST PRACTICES
- DESTINATION:
  - INVITE ALL DISCIPLINES IN
  - SCIENCE ON DISPLAY
  - APPEALING STUDY SPACES
- TECHNOLOGY INTEGRATION
- STUDENTS STUDYING IN ALL SPACES
- FACULTY ENGAGEMENT CREATED TRUST IN PRIORITIES
- SUSTAINABLE DESIGN HAS BEEN ENCOURAGED
- PARTNERSHIP BETWEEN ALL PARTIES











# THE EDUCATIONAL VALUE OF LIBERAL ART ENVIRONMENTS FOR LIFE LONG LEARNING

*CENTRE COLLEGE*  
*CASE STUDY*